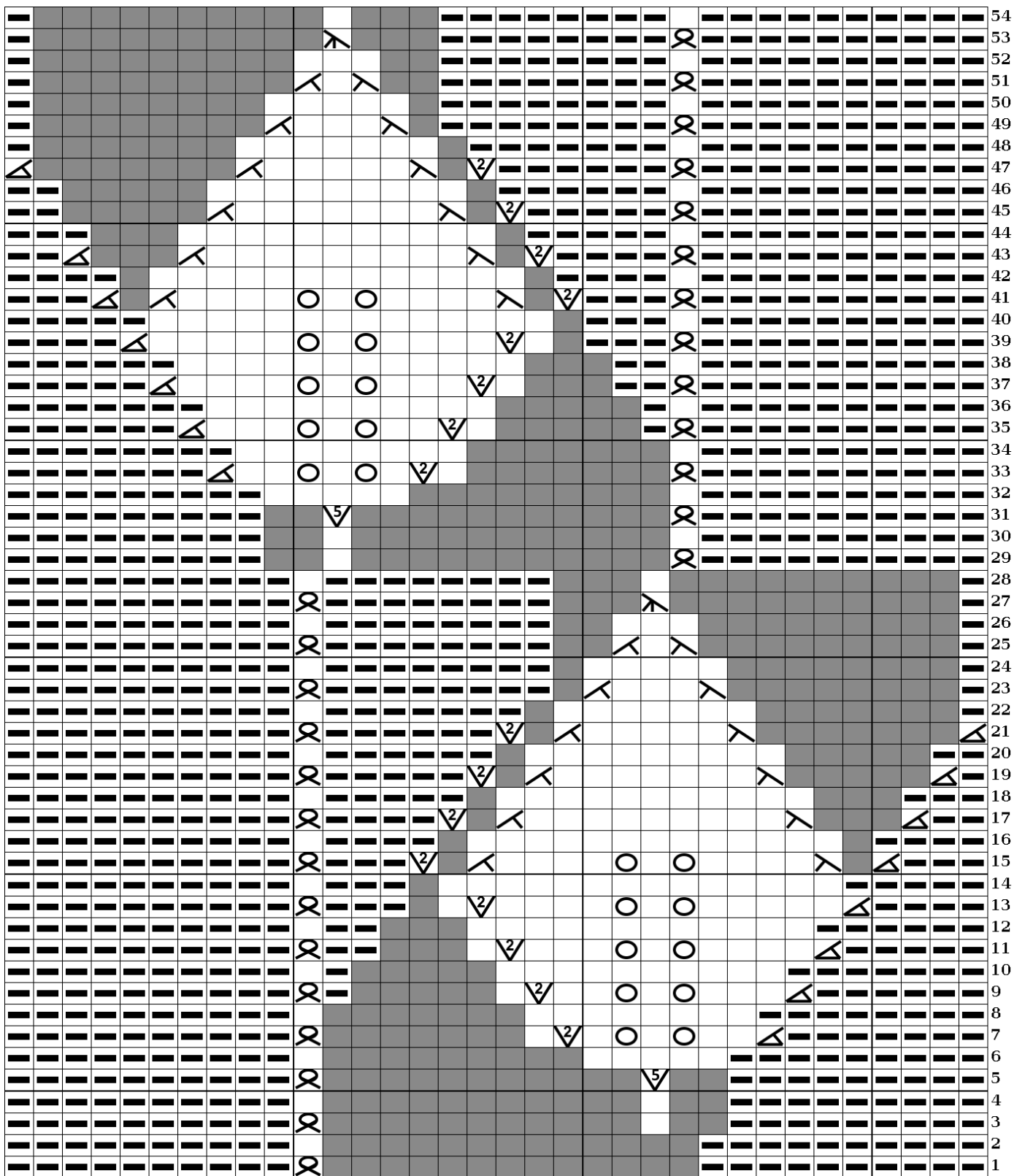








0074







-  Maille endroit sur endroit
Maille envers sur envers
-  Maille envers sur l'endroit
Maille endroit sur l'envers
-  Maille torse
-  Jeté
-  Surjet simple
-  Surjet double
-  2 mailles ensemble

 2 mailles ensemble envers

 Tricoter 2 mailles dans la maille

 Tricoter 5 mailles dans la maille

 Vide, pas de maille